

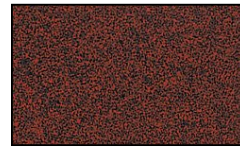
1 Louver Brick Light Incandescent Cast Aluminum 120v Step & Brick Landscape Light



Finish Options



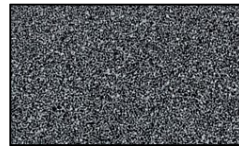
Black Texture



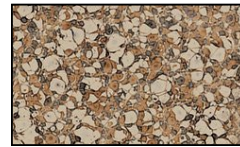
Rust



Weathered Brown



Weathered Iron



Camel Tone

Product Description

CONSTRUCTION: Heavy duty stamped aluminum face plate with heavy duty stamped galvanized steel powder coated high reflective white back box

LENS: High impact white acrylic

GASKET: Black neosponge closed cell; .190" thickness

LAMP SUPPLIED:NONE

SOCKET: Double contact bayonet, brass nickel plated lamp socket screw shell (Ba15s) with 200°C silicone lead wires

GRAND LIGHT

Lighting & Design Since 1929

104 Day St. Seymour, CT 06483
PH: 1-800-922-1469 Fax: 203-785-1184
Web: GrandLight.com

1 Louver Brick Light Incandescent Cast Aluminum 120v Step & Brick Landscape Light

#57492 - Camel Tone

#57491 - Antique Verde

#57493 - Rust

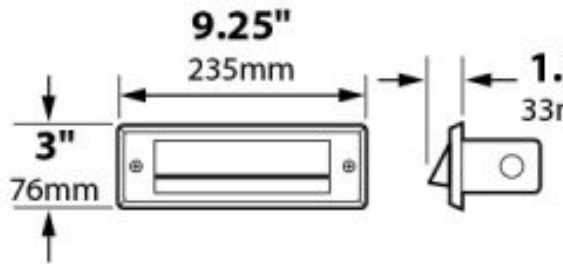
#57495 - Weathered Iron

#57494 - Weathered Brown

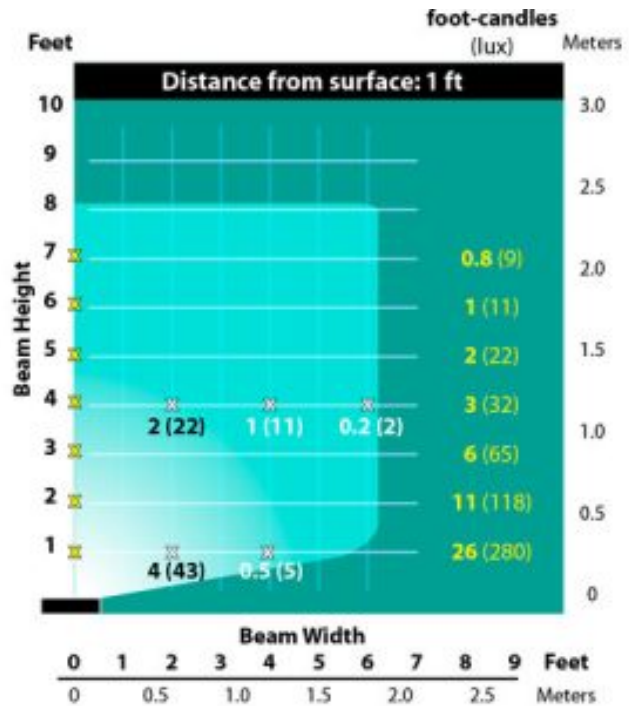
#57490 - Black Texture

1 Louver Brick Light Incandescent Cast Aluminum 120v Step & Brick Landscape Light

Line Drawing



Photometrics



GRAND LIGHT

Lighting & Design Since 1929

104 Day St. Seymour, CT 06483
 PH: 1-800-922-1469 Fax: 203-785-1184
 Web: GrandLight.com

1 Louver Brick Light Incandescent Cast Aluminum 120v Step & Brick Landscape Light

#57492 - Camel Tone #57495 - Weathered Iron
 #57491 - Antique Verde #57494 - Weathered Brown
 #57493 - Rust #57490 - Black Texture