

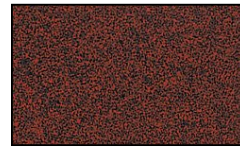
1 Louver Brick Light Incandescent Cast Aluminum 12v Step & Brick Landscape Light



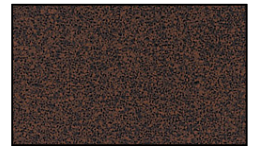
Finish Options



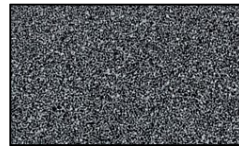
Black Texture



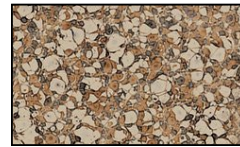
Rust



Weathered Brown



Weathered Iron



Camel Tone

Product Description

CONSTRUCTION: Heavy duty stamped aluminum face plate with heavy duty stamped galvanized steel powder coated high reflective white back box

LENS: High impact white acrylic

GASKET: Black neosponge closed cell; .190" thickness

LAMP SUPPLIED:NONE

SOCKET: Single contact bayonet, brass nickel plated lamp socket screw shell (Ba15s) with 200°C silicone lead wires

WIRING: Black 3 foot 18/2 zip cord

GRAND LIGHT

Lighting & Design Since 1929

104 Day St. Seymour, CT 06483
PH: 1-800-922-1469 Fax: 203-785-1184
Web: GrandLight.com

1 Louver Brick Light Incandescent Cast Aluminum 12v Step & Brick Landscape Light

#57486 - Camel Tone

#57489 - Weathered Iron

#57488 - Weathered Brown

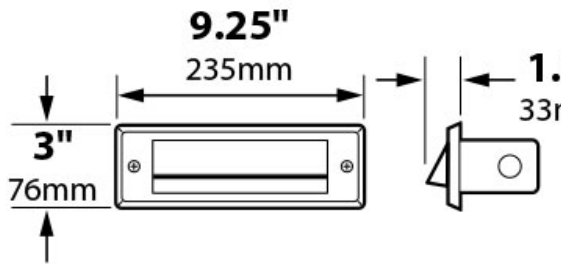
#57484 - Black Texture

#57485 -

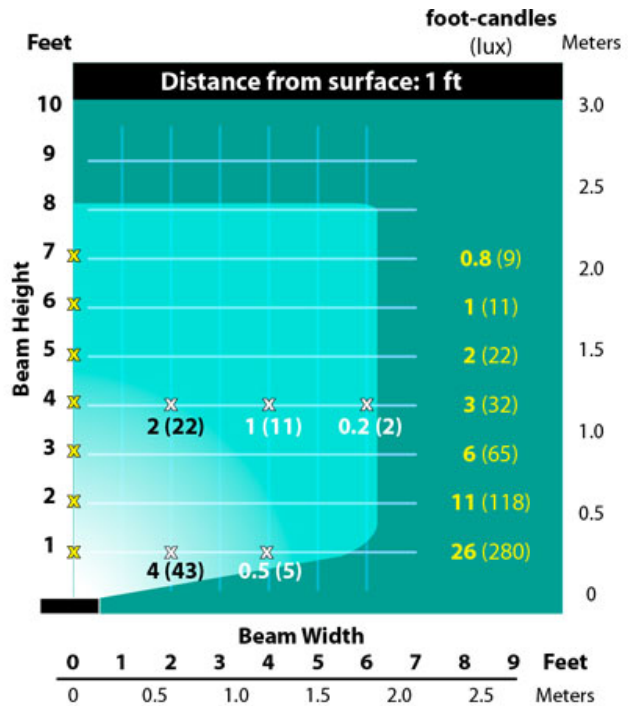
#57487 - Rust

1 Louver Brick Light Incandescent Cast Aluminum 12v Step & Brick Landscape Light

Line Drawing



Photometrics



GRAND LIGHT

Lighting & Design Since 1929

104 Day St. Seymour, CT 06483
 PH: 1-800-922-1469 Fax: 203-785-1184
 Web: GrandLight.com

1 Louver Brick Light Incandescent Cast Aluminum 12v Step & Brick Landscape Light

#57486 - Camel Tone #57484 - Black Texture
 #57489 - Weathered Iron #57485 -
 #57488 - Weathered Brown #57487 - Rust