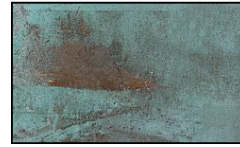


1 Louver Brick Light Incandescent Stamped Brass 12v Step & Brick Landscape Light

Finish Options



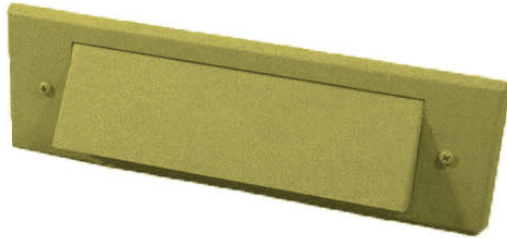
Brass



Acid Verde



Acid Rust



Product Description

CONSTRUCTION: Heavy duty stamped brass face plate with heavy duty stamped galvanized steel powder coated high reflective white back box

LENS: High impact white acrylic

GASKET: Black neosponge closed cell; .190" thickness

LAMP SUPPLIED: 2 x 18 watt S8 #1141 bulb; 1200 hours average rating (25w max.)

SOCKET: Single contact bayonet, brass nickel plated lamp socket screw shell (Ba15s) with 200°C silicone lead wires

WIRING: Black 3 foot 18/2 zip cord

GRAND LIGHT

Lighting & Design Since 1929

104 Day St. Seymour, CT 06483
PH: 1-800-922-1469 Fax: 203-785-1184
Web: GrandLight.com

1 Louver Brick Light Incandescent Stamped Brass 12v Step & Brick Landscape Light

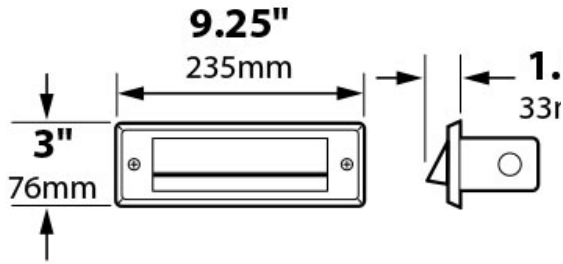
#57498 - Acid Rust

#57497 - Acid Verde

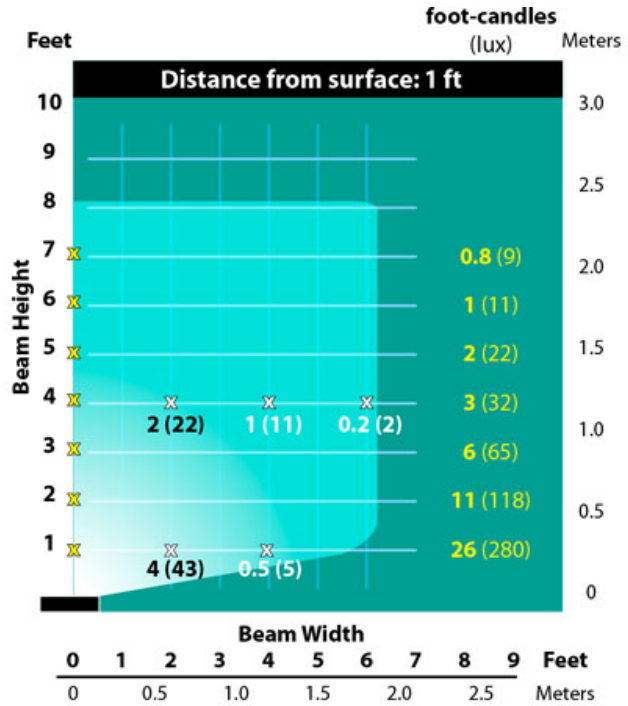
#57496 - Brass

1 Louver Brick Light Incandescent Stamped Brass 12v Step & Brick Landscape Light

Line Drawing



Photometrics



GRAND LIGHT

Lighting & Design Since 1929

104 Day St. Seymour, CT 06483
 PH: 1-800-922-1469 Fax: 203-785-1184
 Web: GrandLight.com

1 Louver Brick Light Incandescent Stamped Brass 12v Step & Brick Landscape Light

#57498 - Acid Rust

#57497 - Acid Verde

#57496 - Brass