

## 12v Tree Ring w/ Adjustable Fixture Hubs

### Size

20"

20"

24"

24"



### Product Description

**CONSTRUCTION:** Aluminum or brass tree ring with j-box. 20" or 24" diameter. Adjustable fixture hubs allow precise placement of fixtures around tree ring. 20" Model fits trunk sizes of 6"-11" and accommodates up to 4 fixtures. 24" Model fits trunk sizes of 10"-14" and accommodates up to 6 fixtures.

**MOUNTING:** 4x 3/8" x 6" SS Hex Bolts (to secure to tree trunk).  
2x 3/8" x 1.5" SS Hex Bolts (closes ring)  
4x or 6x 1/2" NPT fittings (secures up to four or six fixtures)

# GRAND LIGHT

*Lighting & Design Since 1929*

104 Day St. Seymour, CT 06483  
PH: 1-800-922-1469 Fax: 203-785-1184  
Web: GrandLight.com

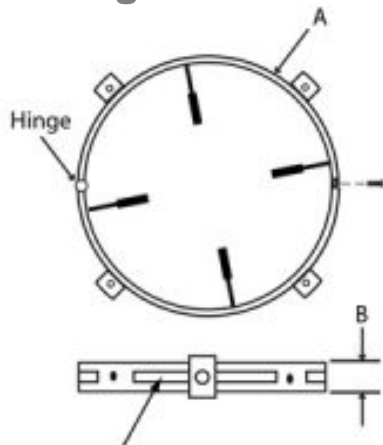
### 12v Tree Ring w/ Adjustable Fixture Hubs

|                               |                               |
|-------------------------------|-------------------------------|
| #127998 - Aluminum/Black/20"  | #128001 - Brass/24"           |
| #128003 - Brass/Acid Rust/24" | #214505 - Aluminum/Bronze/24" |
| #127999 - Aluminum/Black/24"  | #128000 - Brass/20"           |
| #128002 - Brass/Acid Rust/20" | #214506 - Aluminum/Brown/24"  |

*...and more! Contact us for more information.*

# 12v Tree Ring w/ Adjustable Fixture Hubs

## Line Drawing



Groove Allows Precise Placement Of Adjustable Fixture Hubs

| A        | B  |
|----------|----|
| 20" Dia. | 2" |
| 24" Dia. | 2" |

**GRAND LIGHT**  
*Lighting & Design Since 1929*

104 Day St. Seymour, CT 06483  
PH: 1-800-922-1469 Fax: 203-785-1184  
Web: GrandLight.com

### 12v Tree Ring w/ Adjustable Fixture Hubs

#127998 - Aluminum/Black/20"      #128001 - Brass/24"  
#128003 - Brass/Acid Rust/24"      #214505 - Aluminum/Bronze/24"  
#127999 - Aluminum/Black/24"      #128000 - Brass/20"  
#128002 - Brass/Acid Rust/20"      #214506 - Aluminum/Brown/24"

*...and more! Contact us for more information.*