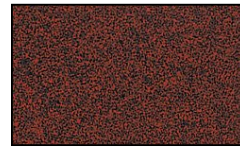


4 Louver Step Light Incandescent Cast Aluminum 12v Step & Brick Landscape Light

Finish Options



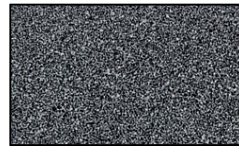
Black Texture



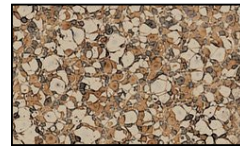
Rust



Weathered Brown



Weathered Iron



Camel Tone

Product Description

CONSTRUCTION: Heavy duty aluminum face plate with a heavy duty stamped galvanized steel powder coated high reflective white back box

GASKET: Black neosponge closed cell; .190" thickness

LAMP SUPPLIED: NONE

SOCKET: Single contact bayonet, brass nickel plated lamp socket screw shell (Ba15s) with 200°C silicone lead wires

WIRING: Black 3 foot 18/2 zip cord

GRAND LIGHT

Lighting & Design Since 1929

104 Day St. Seymour, CT 06483
PH: 1-800-922-1469 Fax: 203-785-1184
Web: GrandLight.com

4 Louver Step Light Incandescent Cast Aluminum 12v Step & Brick Landscape Light

#12059 - Camel Tone

#57350 - Antique Verde

#57351 - Rust

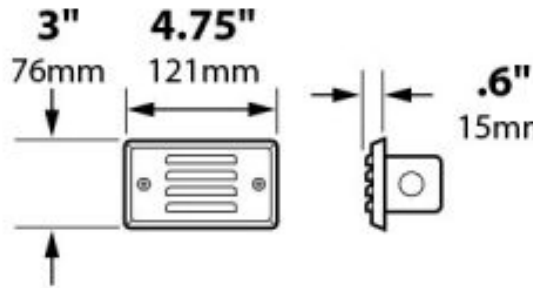
#57352 - Weathered Iron

#5179 - Weathered Brown

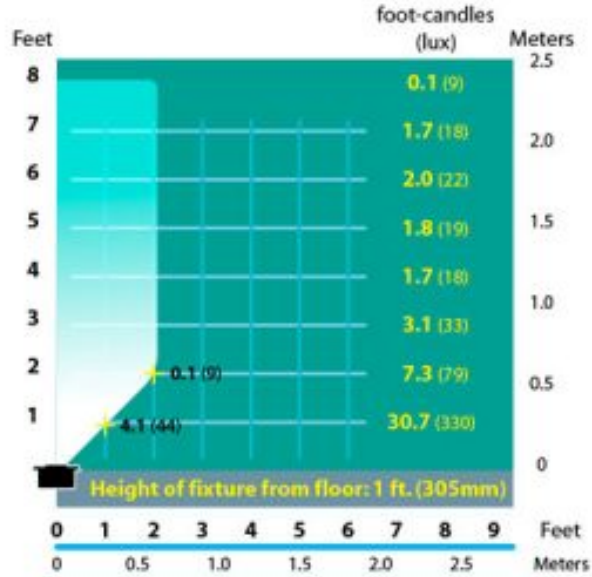
#57349 - Black Texture

4 Louver Step Light Incandescent Cast Aluminum 12v Step & Brick Landscape Light

Line Drawing



Photometrics



GRAND LIGHT

Lighting & Design Since 1929

104 Day St. Seymour, CT 06483
 PH: 1-800-922-1469 Fax: 203-785-1184
 Web: GrandLight.com

4 Louver Step Light Incandescent Cast Aluminum 12v Step & Brick Landscape Light

#12059 - Camel Tone #57352 - Weathered Iron
 #57350 - Antique Verde #5179 - Weathered Brown
 #57351 - Rust #57349 - Black Texture