

Biella Collection 4 Light Small Brass & Crystal Chandelier



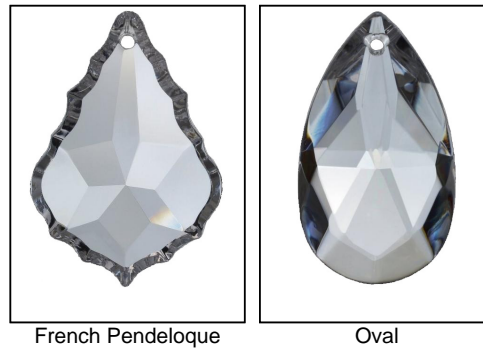
Finish



Product Description

Lights: 4
Diameter: 10 "
Body Length: 16 "
Candle Cover: 2"
Wire Included: 5"
Chain Included: 36"
Weight: 8 lbs
Finish Shown: French Gold Glossy
Crystal Package Shown: Oval Precision

Crystal Shape



GRAND LIGHT

Lighting & Design Since 1929

104 Day St. Seymour, CT 06483
PH: 1-800-922-1469 Fax: 203-785-1184
Web: GrandLight.com

Biella Collection 4 Light Small Brass & Crystal Chandelier

#178153 - Brass w/Umber Inlay/French Pendeloque/Precision Clear/Pale Ivory	#178154 - Antique Black/French Pendeloque/Precision Clear/Pale Ivory
#178155 - French Gold/French Pendeloque/Precision Clear/Pale Ivory	#178156 - Antique White/French Pendeloque/Precision Clear/Pale Ivory

Crystal Cut



Precision Clear



Swarovski STRASS

Candle Covers



Cast Brass Drip



Matching Brass



Pale Ivory



True Beeswax

GRAND LIGHT

Lighting & Design Since 1929

104 Day St. Seymour, CT 06483
PH: 1-800-922-1469 Fax: 203-785-1184
Web: GrandLight.com

Biella Collection 4 Light Small Brass & Crystal Chandelier

#178153 - Brass w/Umber
Inlay/French Pendeloque/Precision
Clear/Pale Ivory
#178155 - French Gold/French
Pendeloque/Precision Clear/Pale
Ivory

#178154 - Antique Black/French
Pendeloque/Precision Clear/Pale
Ivory
#178156 - Antique White/French
Pendeloque/Precision Clear/Pale
Ivory