

Biella Collection 4 Light Small Brass & Crystal Chandelier



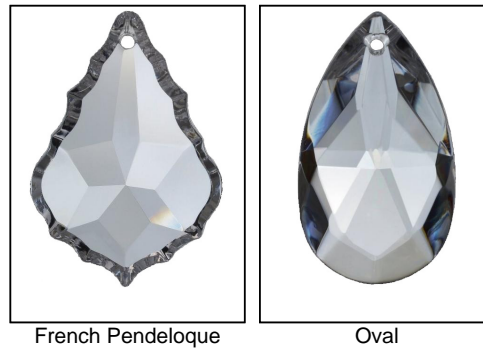
Finish



Product Description

Lights: 4
 Diameter: 10"
 Body Length: 10"
 Candle Cover: 2"
 Wire Included: 5"
 Chain Included: 36"
 Weight: 5 lbs
 Finish Shown: Polished Brass With Black Inlay
 Crystal Package Shown: French Pendalogue Precision

Crystal Shape



GRAND LIGHT

Lighting & Design Since 1929

104 Day St. Seymour, CT 06483
 PH: 1-800-922-1469 Fax: 203-785-1184
 Web: GrandLight.com

Biella Collection 4 Light Small Brass & Crystal Chandelier

#178118 - Antique
 Black/Oval/Swarovski®
 STRASS/True Beeswax
 #178130 - Antique
 Black/Oval/Swarovski®
 STRASS/Matching Brass

#178106 - Antique
 Black/Oval/Swarovski®
 STRASS/Pale Ivory
 #178142 - Antique
 Black/Oval/Swarovski®
 STRASS/Cast Brass Drip

Crystal Cut



Precision Clear



Swarovski® STRASS

Candle Covers



Cast Brass Drip



Matching Brass



Pale Ivory



True Beeswax

GRAND LIGHT

Lighting & Design Since 1929

104 Day St. Seymour, CT 06483
PH: 1-800-922-1469 Fax: 203-785-1184
Web: GrandLight.com

Biella Collection 4 Light Small Brass & Crystal Chandelier

#178118 - Antique
Black/Oval/Swarovski®
STRASS/True Beeswax
#178130 - Antique
Black/Oval/Swarovski®
STRASS/Matching Brass

#178106 - Antique
Black/Oval/Swarovski®
STRASS/Pale Ivory
#178142 - Antique
Black/Oval/Swarovski®
STRASS/Cast Brass Drip