

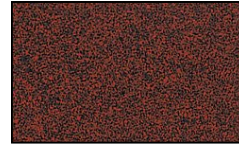
# Bollard 3.5" Incandescent Aluminum 120v Path Landscape Light



## Finish Options



Black Texture



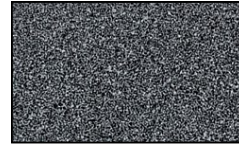
Rust



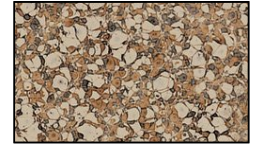
Weathered Brown



Antique Verde



Weathered Iron



Camel Tone

## Product Description

CONSTRUCTION: 3.5" diameter aluminum bollard with aluminum top

LENS: White high-impact acrylic

LAMP SUPPLIED: 25w T8

SOCKET: Double contact bayonet base with 200°C silicone lead wires

MOUNTING: 4 black ABS stabilizing fins

**GRAND LIGHT**

*Lighting & Design Since 1929*

104 Day St. Seymour, CT 06483  
PH: 1-800-922-1469 Fax: 203-785-1184  
Web: GrandLight.com

### Bollard 3.5" Incandescent Aluminum 120v Path Landscape Light

#125032 - Camel Tone

#125031 - Antique Verde

#125034 - Rust

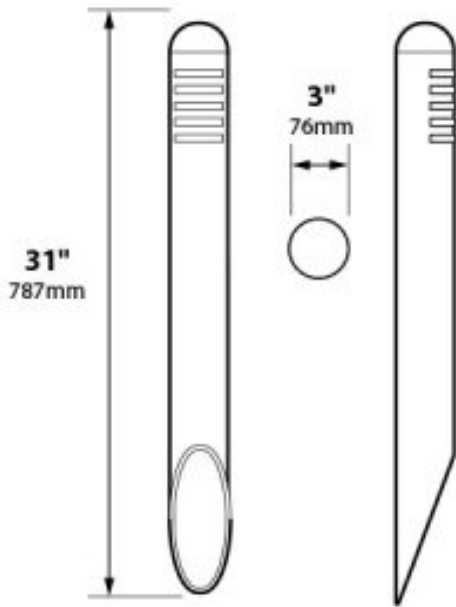
#125035 - Weathered Iron

#125033 - Weathered Brown

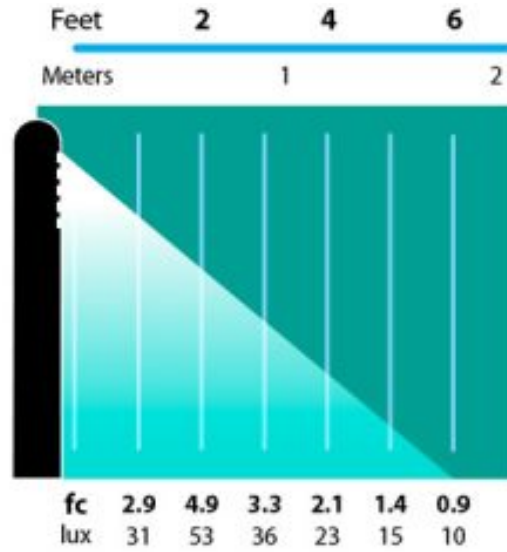
#125030 - Black Texture

# Bollard 3.5" Incandescent Aluminum 120v Path Landscape Light

## Line Drawing



## Photometrics



Light Distribution and Photometrics  
6 ft. (1.8m) radius

**GRAND LIGHT**

*Lighting & Design Since 1929*

104 Day St. Seymour, CT 06483  
PH: 1-800-922-1469 Fax: 203-785-1184  
Web: GrandLight.com

### Bollard 3.5" Incandescent Aluminum 120v Path Landscape Light

- |                         |                           |
|-------------------------|---------------------------|
| #125032 - Camel Tone    | #125035 - Weathered Iron  |
| #125031 - Antique Verde | #125033 - Weathered Brown |
| #125034 - Rust          | #125030 - Black Texture   |