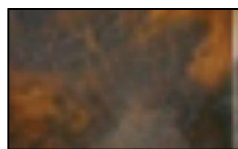


## Castile 28" Dia Large Traditional Pendant Light

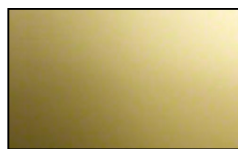


### Finish Options



Antique Iron

### Shade Options



Gold

### Product Description

The mention of Castile conjures images of cool and graceful courtyards, of the gentle interplay of light and shadow over Moorish tiles, passing through filigreed ironwork and across the deep recesses of finely carved giltwood ornaments. Castilian decorative style in the 16th century inspires a collection of lighting which captures the beauty and Romance of Castile, through richly-wrought iron, with worn gold leaf highlights, gold-dusted blown glass, beige silk handsewn shades with antiqued trimmings, and warm-toned mica panels. DIMENSIONS: H 38" x W 28"

WEIGHT: 34 LBS

BULB: A-21

WATTS: 150

BASE: Medium

SOCKET: Porcelain

BULB QTY.: 3

CHAIN/ROD LENGTH: 6 ft

**GRAND LIGHT**  
*Lighting & Design Since 1929*

104 Day St. Seymour, CT 06483  
PH: 1-800-922-1469 Fax: 203-785-1184  
Web: GrandLight.com

**Castile 28" Dia Large Traditional Pendant Light**  
#49784 - Antique Iron/Gold