

Century Collection 14" Dia Medium Crystal Flush Mount Ceiling Light



Finish



Gold



Chrome

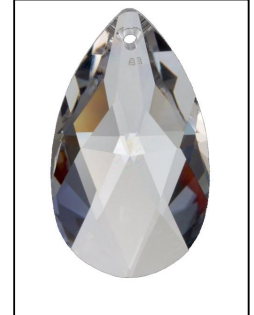
Crystal Cut



Royal Cut



Elegant Cut



Swarovski® Spectra



Swarovski® Strass

Product Description

The Century Collection is a classic 19th century French inspired ceiling light consisting of flowing lines of light refracting crystals gently dropping down into a bell shape. Each layer is banded with crystal octagons and a single crystal spear. A column of chrome or gold inside with soft candelabra bulbs allows the glow from within to peek between the crystals strands. Height: 10 Inches

Width: 14 Inches

Length: 0 Inches

Chain/Wire Included: N/A

Bulbs: 4 - 60 Watt - Candelabra

GRAND LIGHT

Lighting & Design Since 1929

104 Day St. Seymour, CT 06483
PH: 1-800-922-1469 Fax: 203-785-1184
Web: GrandLight.com

Century Collection 14" Dia Medium Crystal Flush Mount Ceiling Light

#68889 - Gold/Elegant Cut	#68888 - Gold/Royal Cut
#68890 - Gold/Swarovski® Spectra	#68891 - Gold/Swarovski® Strass
#68893 - Chrome/Elegant Cut	#68892 - Chrome/Royal Cut
#68894 - Chrome/Swarovski® Spectra	#68895 - Chrome/Swarovski® Strass

...and more! Contact us for more information.
Page 1 of 1