

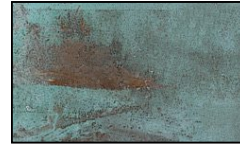
# China Hat 3.5" with Finial Copper 12v Area Landscape Light



## Finish Options



Acid Rust



Acid Verde



Copper

## Bulb Options



LED



Incandescent

## Product Description

**CONSTRUCTION:** Spun copper China Hat with matching extruded stanchion and cast brass adjustable hub  
**LAMP SUPPLIED:** 20w T4/S.C. Halogen 10,000 hours average rating (20w max) or 2.2w 50,000 hours average rating OMNI-2 LED  
**SOCKET:** Single contact bayonet, brass nickel plated lamp socket screw shell  
**WIRING:** Black 3 foot 18/2 zip cord from base of fixture  
**MOUNTING:** Black 9" ABS stake, tapped 1/2" NPS

**GRAND LIGHT**  
*Lighting & Design Since 1929*

104 Day St. Seymour, CT 06483  
PH: 1-800-922-1469 Fax: 203-785-1184  
Web: GrandLight.com

### China Hat 3.5" with Finial Copper 12v Area Landscape Light

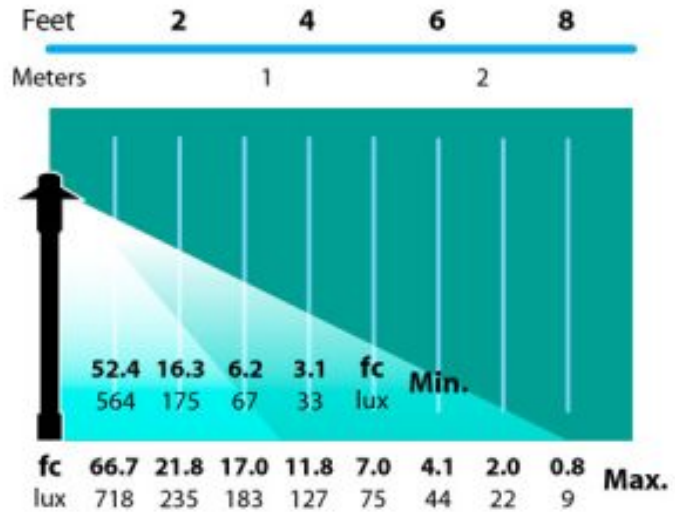
#124658 - Copper/Incandescent      #124657 - Acid Verde/Incandescent  
#124656 - Acid Rust/Incandescent      #124659 - Acid Rust/LED  
#124660 - Acid Verde/LED      #124661 - Copper/LED

# China Hat 3.5" with Finial Copper 12v Area Landscape Light

## Line Drawing



## Photometrics



Half Spread Photometrics  
7 ft. (2.1m) to 16 ft. (4.9m) diameter

**GRAND LIGHT**

*Lighting & Design Since 1929*

104 Day St. Seymour, CT 06483  
PH: 1-800-922-1469 Fax: 203-785-1184  
Web: GrandLight.com

### China Hat 3.5" with Finial Copper 12v Area Landscape Light

#124658 - Copper/Incandescent      #124657 - Acid Verde/Incandescent  
#124656 - Acid Rust/Incandescent    #124659 - Acid Rust/LED  
#124660 - Acid Verde/LED            #124661 - Copper/LED