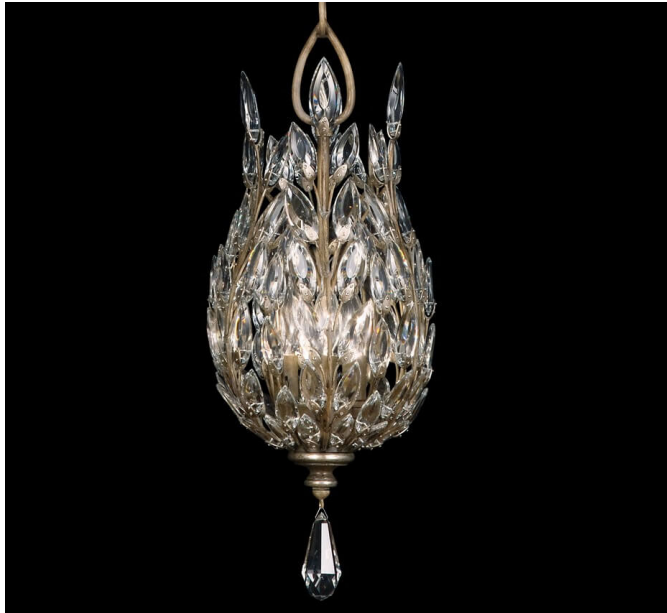
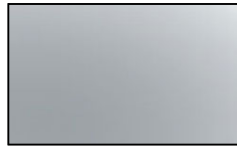


# Crystal Laurel 11" Dia Medium Transitional Pendant Light



## Finish Options



Silver

## Product Description

To ancient Mediterranean peoples, laurel stood for victory, distinction and merit. The Greeks and Romans wove them into crowns and gave them as honors to heroes, athletes, or great poets. The laurel wreath became one of the most enduring design motifs of all time, and inspired the Crystal Laurel Collection of decorative lighting. Stylized crystal leaves with boldly cut facets reflect light in delicate patterns, and the hand-wrought metal forms are finished in antiqued warm silver leaf or gold leaf. DIMENSIONS: H 25" x W 11"

MIN/MAX HEIGHT: 36 - 102

WEIGHT: 19 LBS

BULB: B-10

WATTS: 60

BASE: Candelabra

SOCKET: Phenolic

BULB QTY.: 3

CHAIN/ROD LENGTH: 6 ft

CANOPY DIMENSIONS: 5"H x 8"W

**GRAND LIGHT**  
*Lighting & Design Since 1929*

104 Day St. Seymour, CT 06483  
PH: 1-800-922-1469 Fax: 203-785-1184  
Web: GrandLight.com

**Crystal Laurel 11" Dia Medium Transitional Pendant Light**  
#199224 - Silver