

Hampton Court 4 Light Small Vintage Chandelier



Finish Options

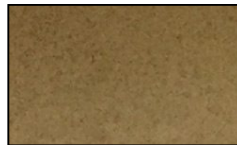


Antique Silver Leaf



Custom

Shade Options



Medium Amber Glass



Custom

Product Description

Hampton Court Palace became a royal palace in 1528, on its acquisition by Henry VIII from Cardinal Wolsey. Its Tudor buildings, surrounded by 60 acres of garden and 750 acres of park, are among the most important in existence, and William and Mary's improvements, designed by Sir Christopher Wren, are an outstanding example of the English Baroque. This eclectic blend of Tudor and Baroque architecture and design is mirrored in the Hampton Court Palace Collection. More specifically, the wonderfully carved and gilded ceiling in The Chapel Royal was the inspiration for the webbed castings, providing an interplay of smooth and textured surfaces, hence combining both classic and modern design elements. The vintage lighting we offer is carefully sourced, restored, and rewired in accordance with UL Standards by our knowledgeable Restoration team. **Dimensions** Height: 16"

Diameter: 14"

Lights: (4) 60w Medium Base (Bulbs Not Included)

Features Historical Chandelier

Four Medium-Based Sockets Rated for 60W

UL Listed for Dry Locations

Customizable

Don't Like What You See?

Grand Light's custom design professionals can help modify this fixture or assist in designing and manufacturing a unique, one-of-a-kind handcrafted fixture.

GRAND LIGHT
Lighting & Design Since 1929

104 Day St. Seymour, CT 06483
PH: 1-800-922-1469 Fax: 203-785-1184
Web: GrandLight.com

Hampton Court 4 Light Small Vintage Chandelier

NO SKU - Custom

NO SKU - Custom

#40769 - Antique Silver Leaf/Medium

Amber Glass