

Jamestown I Collection 15" Dia Medium Traditional Semi Flush Ceiling Light



Finish Options



Mahogany Bronze



Polished Brass



Polished Nickel



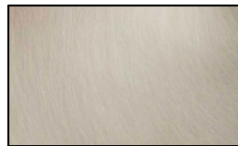
Antique Brass



Satin Brass



Antique Pewter



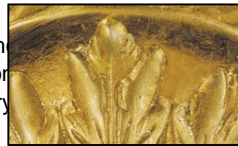
Brushed Nickel



Ebony



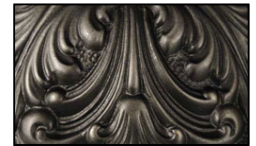
French Brass



Bronzed Gold Leaf



Harvest Bronze



Iron

Product Description

This traditional piece combines simple hand-bent arms and slightly tapered columns and arm scrolls, with an exquisite metal finish. This collection of lights are hand plated and polished, making them unmatched in the industry. Each product in this collection is hand made in the U.S.A

Width 15"
Height 12"
Primary Lamps 3
Primary Lamp Wattage 60 W
Primary Lamp Type Candle Clear
Finish Shown: Polished Brass

GRAND LIGHT
Lighting & Design Since 1929

104 Day St. Seymour, CT 06483
PH: 1-800-922-1469 Fax: 203-785-1184
Web: GrandLight.com

Jamestown I Collection 15" Dia Medium Traditional Semi Flush Ceiling Light

#187797 - Harvest Bronze #187798 - Iron
#187791 - Satin Brass #10301 - Mahogany Bronze
#10302 - Polished Brass #187789 - Polished Nickel
#187790 - Antique Brass #187793 - Brushed Nickel

...and more! Contact us for more information.
Page 1 of 1