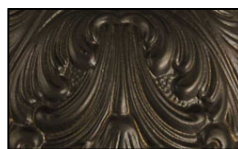


Kensington I Collection 6 Light Medium Traditional Chandelier



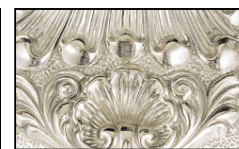
Finish Options



Mahogany Bronze



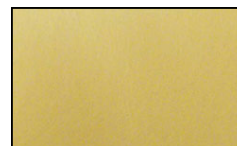
Polished Brass



Polished Nickel



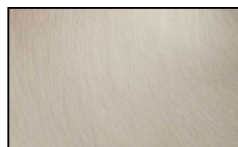
Antique Brass



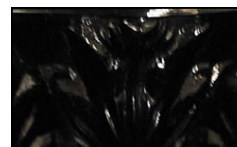
Satin Brass



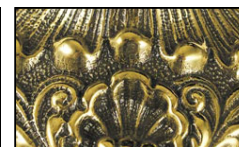
Antique Pewter



Brushed Nickel



Ebony



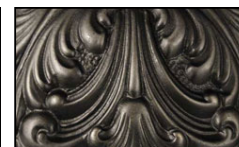
French Brass



Bronzed Gold Leaf



Harvest Bronze



Iron

Product Description

Williamsburg styled with embossed and beaded bobeches, cast finials and generous center column proportions define these reproductions. The Polished Silver and Polished Brass are hand buffed with a jeweler's rouge to add depth and splendor; the tall candles evoke the grandeur and elegance of this period. Each lighting product in this collection is made in the U.S.A. Width: 26" Height: 21"

Extension: 57"

Primary Lamps: 6

Primary Lamp Wattage: 60 W

Primary Lamp Type: Candle Clear

Finish Shown: Polished Silver

GRAND LIGHT

Lighting & Design Since 1929

104 Day St. Seymour, CT 06483
PH: 1-800-922-1469 Fax: 203-785-1184
Web: GrandLight.com

Kensington I Collection 6 Light Medium Traditional Chandelier

#187958 - Mahogany Bronze

#187969 - Iron

#187959 - Polished Brass

#187966 - French Brass

#187967 - Bronzed Gold Leaf

#187962 - Satin Brass

#187963 - Antique Pewter

#187968 - Harvest Bronze

...and more! Contact us for more information.