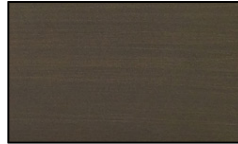


Brescia Collection 3 Light Small Crystal Chandelier



Finish



Dark Bronze



French Gold

Crystal Cut



Royal Cut



Elegant Cut



Swarovski® Spectra



Swarovski® Strass



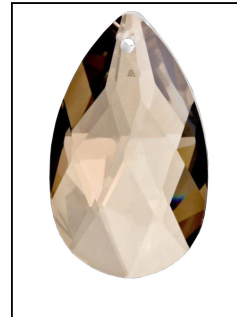
Gold Shadow Swarovski®



Gold Shadow Royal Cut



Golden Teak Swarovski®



Golden Teak Royal Cut

Product Description

Petite and sweet, the Brescia Collection is packaged perfectly to light up small spaces. Crafted of our finest brass casting in any of our four finishes with a charming crystal drape, the Lille Collection is sure to be durable and delightful. Height: 10 Inches Width: 10 Inches

Chain/Wire Included: 6 ft.

Bulbs: (3) 60 Watt - Candelabra

*Golden Shadow Crystals only available with Antique Bronze finish. **Golden Teak Crystals only available with French Gold finish.

GRAND LIGHT
Lighting & Design Since 1929

104 Day St. Seymour, CT 06483
PH: 1-800-922-1469 Fax: 203-785-1184
Web: GrandLight.com

Brescia Collection 3 Light Small Crystal Chandelier

- #69257 - French Gold/Royal Cut
- #69258 - French Gold/Swarovski® Strass
- #69253 - Dark Bronze/Royal Cut
- #69254 - Dark Bronze/Elegant Cut
- #69255 - Dark Bronze/Swarovski® Spectra
- #69256 - Dark Bronze/Swarovski® Strass