

Pisa-Livorno Collection 12" W Medium Crystal Wall Sconce



Finish



Chrome



Gold

Crystal Cut



Clear Elegant Cut



Clear Royal Cut



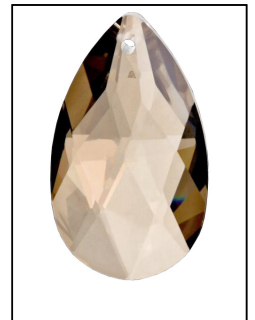
Clear Swarovski® Spectra



Clear Swarovski® Strass



Golden Teak Royal Cut



Golden Teak Swarovski®

Product Description

Bring the beauty and passion of the Palace of Versailles into your home with this ageless classic. The Pisa-Livorno has been the gold standard for elegance and grace in the chandelier world for hundreds of years. The Maria Theresa has delicate glass arms draped with plentiful amounts of classic clear crystal or the wildly popular golden teak crystal and is guaranteed to make your home feel like a palace. Height: 22 Inches

Width: 12 Inches

Chain/Wire Included: N/A

Bulbs: (3) 60 Watt - Candelabra

GRAND LIGHT
Lighting & Design Since 1929

104 Day St. Seymour, CT 06483
PH: 1-800-922-1469 Fax: 203-785-1184
Web: GrandLight.com

Pisa-Livorno Collection 12" W Medium Crystal Wall Sconce

#69393 - Gold/Golden Teak

Swarovski®

#48275 - Gold/Clear Swarovski®
Strass

#69392 - Gold/Golden Teak Royal
Cut

#48274 - Gold/Clear Swarovski®
Spectra