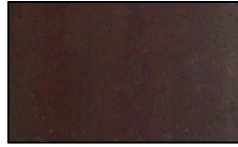


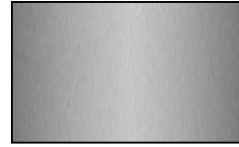
Modular New York Small Contemporary Outdoor Wall Light



Finish Options



Bronze



Stainless Steel

Bulb Options



Incandescent



Fluorescent

Product Description

Wall mounted specification grade indoor/outdoor luminaire. IP67 rated. Inner assembly constructed of extruded aluminum with a tempered glass cover. A double coat of epoxy primer and polyester powder-coating mean durability even in harsh outdoor conditions. The outer decorative cover is constructed of stainless steel. The brushed steel finish includes silver luminaire and has been electrophoretically coated which not only enhances the beauty of the finish, but also increases surface durability and helps to protect against damaging environmental conditions. The bronze finish includes bronze luminaire and utilizes a polyester powder coat paint to help protect against damaging environmental conditions. Mounts vertically only. Available in two lamping options (lamps included): Incandescent includes (2) 120 volt 60 watt or equivalent E26 base BT15 halogen lamps; Fluorescent includes (2) 24 watt 2G11 base twin tube compact fluorescent lamps. Fluorescent may also be lamped with (2) 18 or 27 watt 2G11 base twin tube compact fluorescent lamps (not included). 120v.

GRAND LIGHT
Lighting & Design Since 1929

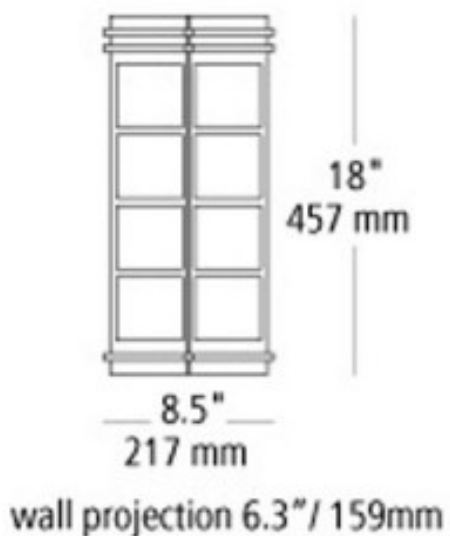
104 Day St. Seymour, CT 06483
PH: 1-800-922-1469 Fax: 203-785-1184
Web: GrandLight.com

Modular New York Small Contemporary Outdoor Wall Light

#103701 - Bronze/Incandescent #104284 - Bronze/Fluorescent
#103702 - Stainless Steel/Incandescent #104286 - Stainless Steel/Fluorescent

Modular New York Small Contemporary Outdoor Wall Light

Line Drawing



GRAND LIGHT

Lighting & Design Since 1929

104 Day St. Seymour, CT 06483
PH: 1-800-922-1469 Fax: 203-785-1184
Web: GrandLight.com

Modular New York Small Contemporary Outdoor Wall Light

#103701 - Bronze/Incandescent	#104284 - Bronze/Fluorescent
#103702 - Stainless Steel/Incandescent	#104286 - Stainless Steel/Fluorescent