

Napoleonic I Collection 6 Light Large Traditional Chandelier



Finish Options



Mahogany Bronze



Polished Brass



Polished Nickel



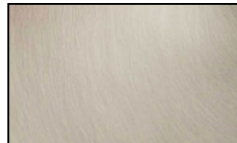
Antique Brass



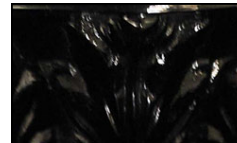
Satin Brass



Antique Pewter



Brushed Nickel



Ebony



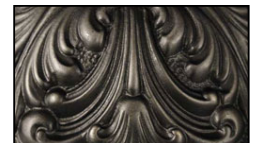
French Brass



Bronzed Gold Leaf



Harvest Bronze



Iron

Product Description

Their reeded stem suspension and satin black nickel center urns define these quintessential Empire pieces. The French Brass finish is created by rubbing a black nickel off of a brass substrate leaving a lightly antiqued component with highlights of the filigree. The glass finish mimics fossilized shell stones when illuminated. The Foyer Chandeliers urns and flush mounts are notable for their use of castings as opposed to stampings rendering a higher quality and more substantial feel. Each lighting product in this collection is hand made in America.

Width: 28"

Height: 28"

Extension: 64"

Primary Lamps: 6

Primary Lamp Wattage: 60 W

Primary Lamp Type: G16 1/2

Finish Shown: French Brass

GRAND LIGHT
Lighting & Design Since 1929

104 Day St. Seymour, CT 06483
PH: 1-800-922-1469 Fax: 203-785-1184
Web: GrandLight.com

Napoleonic I Collection 6 Light Large Traditional Chandelier

#188101 - Polished Brass

#188110 - Harvest Bronze

#188106 - Brushed Nickel

#188109 - Bronzed Gold Leaf

#188103 - Antique Brass

#188102 - Polished Nickel

#188100 - Mahogany Bronze

#188105 - Antique Pewter

...and more! Contact us for more information.