

# Napoleonic I Collection 3 Light Medium Traditional Chandelier



## Finish Options



Mahogany Bronze



Polished Brass



Polished Nickel



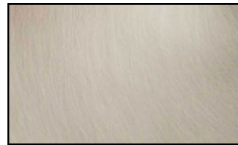
Antique Brass



Satin Brass



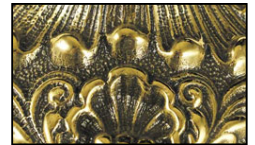
Antique Pewter



Brushed Nickel



Ebony



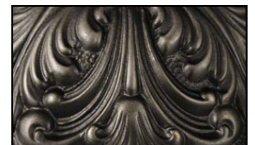
French Brass



Bronzed Gold Leaf



Harvest Bronze



Iron

## Product Description

Their reeded stem suspension and satin black nickel center urns define these quintessential Empire pieces. The French Brass finish is created by rubbing a black nickel off of a brass substrate leaving a lightly antiqued component with highlights of the filigree. The glass finish mimics fossilized shell stones when illuminated. The Foyer Chandeliers urns and flush mounts are notable for their use of castings as opposed to stampings rendering a higher quality and more substantial feel. Each lighting product in this collection is hand made in America. Width: 24"

Height: 24"

Extension: 60"

Primary Lamps: 3

Primary Lamp Wattage: 60 W

Primary Lamp Type: G16 1/2

Finish Shown: French Brass

# GRAND LIGHT

*Lighting & Design Since 1929*

104 Day St. Seymour, CT 06483  
PH: 1-800-922-1469 Fax: 203-785-1184  
Web: GrandLight.com

### Napoleonic I Collection 3 Light Medium Traditional Chandelier

#188094 - Brushed Nickel

#188095 - Ebony

#188088 - Mahogany Bronze

#188097 - Bronzed Gold Leaf

#188093 - Antique Pewter

#188096 - French Brass

#188099 - Iron

#188092 - Satin Brass

*...and more! Contact us for more information.*