

Nidos 30" Dia Extra Large Contemporary Semi-Flush Ceiling Light

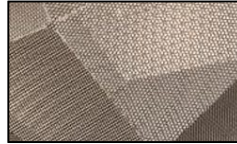


Finish Options



Mirror Black

Shade Options



Nickel



Product Description

Inspired by the engineering genius of nests created by the miniature insect aviators of our world, these multifaceted orbs feature a honeycomb texture and style on steel, hand finished in Nickel and Mirror Black. This four-light pendant is ideal for illuminating dining tables, conference tables, reception areas and other residential and commercial areas. Handcrafted in the USA, this fixture is available in custom sizes, styles, colors and dimmable energy efficient lamping options. It is UL and cUL listed for damp and dry locations.

Specifications:

Total Height: 15.5-85"

Total Width: 30"

Total Weight: 25 lbs.

Base Type: MED

Bulb Wattage: 60

Bulb Quantity: 4

GRAND LIGHT
Lighting & Design Since 1929

104 Day St. Seymour, CT 06483
PH: 1-800-922-1469 Fax: 203-785-1184
Web: GrandLight.com

Nidos 30" Dia Extra Large Contemporary Semi-Flush Ceiling Light
#211026 - Mirror Black/Nickel