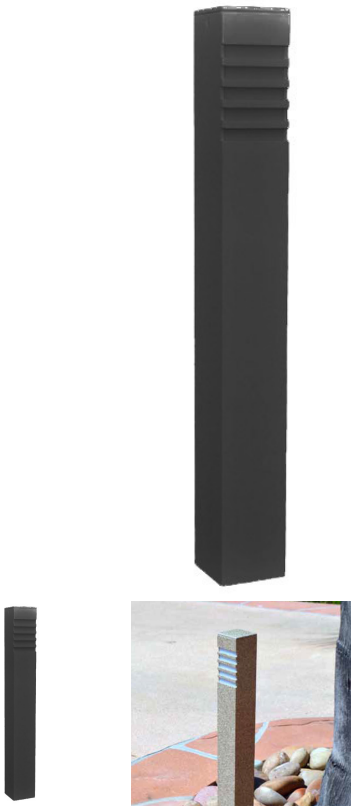


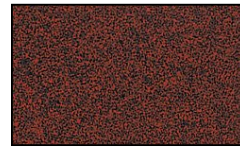
# Square Bollard Incandescent Cast Aluminum 120v Path Landscape Light



## Finish Options



Black Texture



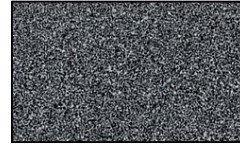
Rust



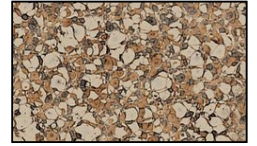
Weathered Brown



Antique Verde



Weathered Iron



Camel Tone

## Product Description

**CONSTRUCTION:** Extruded 2.25" square aluminum  
**LENS:** High temperature white acrylic  
**LAMP SUPPLIED:** 120v, 4w, 300 lumen integrated LED flat panel, warm white 3000K  
**SOCKET:** Double contact bayonet base (Ba15d) with 200° C silicone lead wires.  
**WIRING:** 120v standard wiring  
**MOUNTING:** Angle cut post

**GRAND LIGHT**

*Lighting & Design Since 1929*

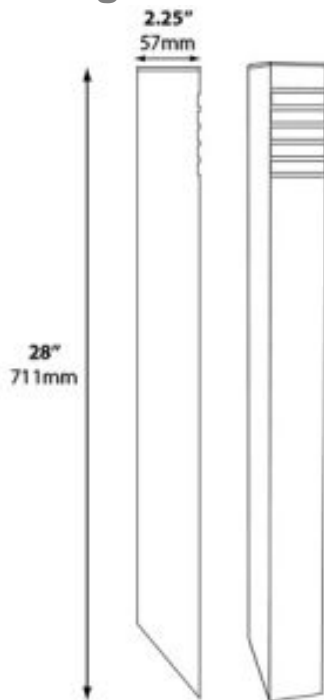
104 Day St. Seymour, CT 06483  
PH: 1-800-922-1469 Fax: 203-785-1184  
Web: GrandLight.com

**Square Bollard Incandescent Cast Aluminum 120v Path Landscape Light**

#161432- - Camel Tone                      #161434- - Weathered Iron  
#161431- - Antique Verde                #161435- - Weathered Brown  
#161433- - Rust                              #161430- - Black Texture

# Square Bollard Incandescent Cast Aluminum 120v Path Landscape Light

## Line Drawing



**GRAND LIGHT**

*Lighting & Design Since 1929*

104 Day St. Seymour, CT 06483  
PH: 1-800-922-1469 Fax: 203-785-1184  
Web: GrandLight.com

**Square Bollard Incandescent Cast Aluminum 120v Path  
Landscape Light**

#161432- - Camel Tone	#161434- - Weathered Iron
#161431- - Antique Verde	#161435- - Weathered Brown
#161433- - Rust	#161430- - Black Texture