

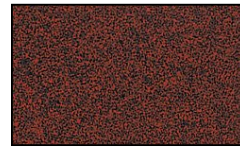
Tulip 4.5" with Leaves Integrated LED Cast Aluminum 120v Path Landscape Light



Finish Options



Black Texture



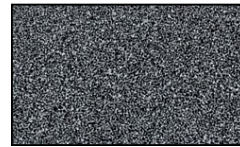
Rust



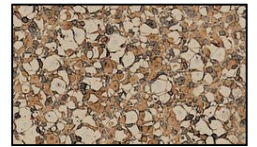
Weathered Brown



Antique Verde



Weathered Iron



Camel Tone

Product Description

CONSTRUCTION: Cast aluminum Tulip; matching extruded aluminum stanchion
LIGHT SOURCE: 120v, 4w, 300 lumen integrated round LED flat panel, warm white 3000K
LIFETIME RATING: 50,000 Hours
SOCKET: None- LED is hard wired inside fixture
LENS: Clear acrylic
MOUNTING: Tapped 1/2" NPS

GRAND LIGHT

Lighting & Design Since 1929

104 Day St. Seymour, CT 06483
PH: 1-800-922-1469 Fax: 203-785-1184
Web: GrandLight.com

Tulip 4.5" with Leaves Integrated LED Cast Aluminum 120v Path Landscape Light

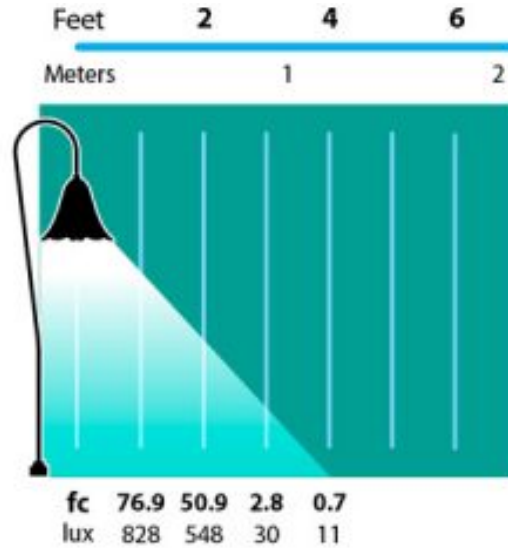
#124952 - Camel Tone
#124951 - Antique Verde
#124954 - Rust
#124955 - Weathered Iron
#124953 - Weathered Brown
#124950 - Black Texture

Tulip 4.5" with Leaves Integrated LED Cast Aluminum 120v Path Landscape Light

Line Drawing



Photometrics



Half Spread Photometrics
8 ft. (2.4m) diameter

GRAND LIGHT

Lighting & Design Since 1929

104 Day St. Seymour, CT 06483
PH: 1-800-922-1469 Fax: 203-785-1184
Web: GrandLight.com

Tulip 4.5" with Leaves Integrated LED Cast Aluminum 120v Path Landscape Light

#124952 - Camel Tone #124955 - Weathered Iron
#124951 - Antique Verde #124953 - Weathered Brown
#124954 - Rust #124950 - Black Texture