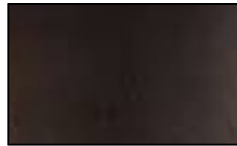


Villa 1919 6 Light Extra Large Transitional Chandelier



Finish Options



Patinated Iron

Shade Options



Painted Mica

Product Description

In 1919, the architect Julia Morgan began work on San Simeon for W. R. Hearst, while Addison Mizner that year broke ground in Palm Beach for El Mirasol, his first major villa commission. Each architect designed custom lighting using finely wrought iron with shades of decorated mica, a mineral rare until the 19th Century, when reserves were found and mined in Africa. The lighting designs of Villa 1919, exquisitely hand-wrought of patinated iron, have delicately painted mica shades that cast a warm and welcoming glow and evoke the enduring style of turn-of-the century America villas. DIMENSIONS: H 30" x W 60" x D 27"

WEIGHT: 28 LBS

BULB: A-19

WATTS: 100

BASE: Medium

SOCKET: Porcelain

BULB QTY.: 6

CHAIN/ROD LENGTH: 6 ft

SHADE: 6.5 x 4.5, 10.5 x 7, 5.5 Polygon

GRAND LIGHT
Lighting & Design Since 1929

104 Day St. Seymour, CT 06483
PH: 1-800-922-1469 Fax: 203-785-1184
Web: GrandLight.com

Villa 1919 6 Light Extra Large Transitional Chandelier
#47667 - Patinated Iron/Painted Mica