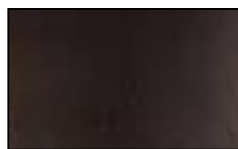


## Villa 1919 Extra Large Transitional Pendant



### Finish Options



Patinated Iron

### Shade Options



Painted Mica

### Product Description

In 1919, the architect Julia Morgan began work on San Simeon for W. R. Hearst, while Addison Mizner that year broke ground in Palm Beach for El Mirasol, his first major villa commission. Each architect designed custom lighting using finely wrought iron with shades of decorated mica, a mineral rare until the 19th Century, when reserves were found and mined in Africa. The lighting designs of Villa 1919, exquisitely hand-wrought of patinated iron, have delicately painted mica shades that cast a warm and welcoming glow and evoke the enduring style of turn-of-the century America villas. DIMENSIONS: H 37" x W 43"

WEIGHT: 39 LBS

BULB: A-21

WATTS: 150

BASE: Medium

SOCKET: Porcelain

BULB QTY.: 3

CHAIN/ROD LENGTH: 6 ft

**GRAND LIGHT**  
*Lighting & Design Since 1929*

104 Day St. Seymour, CT 06483  
PH: 1-800-922-1469 Fax: 203-785-1184  
Web: GrandLight.com

**Villa 1919 Extra Large Transitional Pendant**

#199372 - Patinated Iron/Painted  
Mica