

**MIT - KRESGE  
TYPE: EX1 & F2**



**Description:**

- Existing wall mounted downlight to be modified with one Lighting Science LS-30-75WE-W27-NFL-120-S1-BX 14W 2700k Warm White LED, 800 Lumens, 80CRI, 40,000 hrs by others

**Location:**

- Exterior

**Work Scope:**

- Repair all minor mechanical defects.
- Remove existing painted finish and refinish interior and exterior with Tiger Drylac, 49/81210, Alaska Black Matte Polyester powder coat.
- Replace and rewire all electrical components with UL listed products and test in accordance with UL standards. Medium base socket to be utilized.
- There are two styles of wire exit locations for Types EX1 & F2. (see attached specifications)
- Lamp to be flush with second louver.

**Approval:** \_\_\_\_\_ **Date:** \_\_\_\_\_

**GRAND LIGHT**

Historic Lighting Restoration & Custom Lighting

104 Day St. Seymour, Ct 06483

PH: 1-800-922-1469 Fax: 203-785-1184

Web: LightRestoration.com

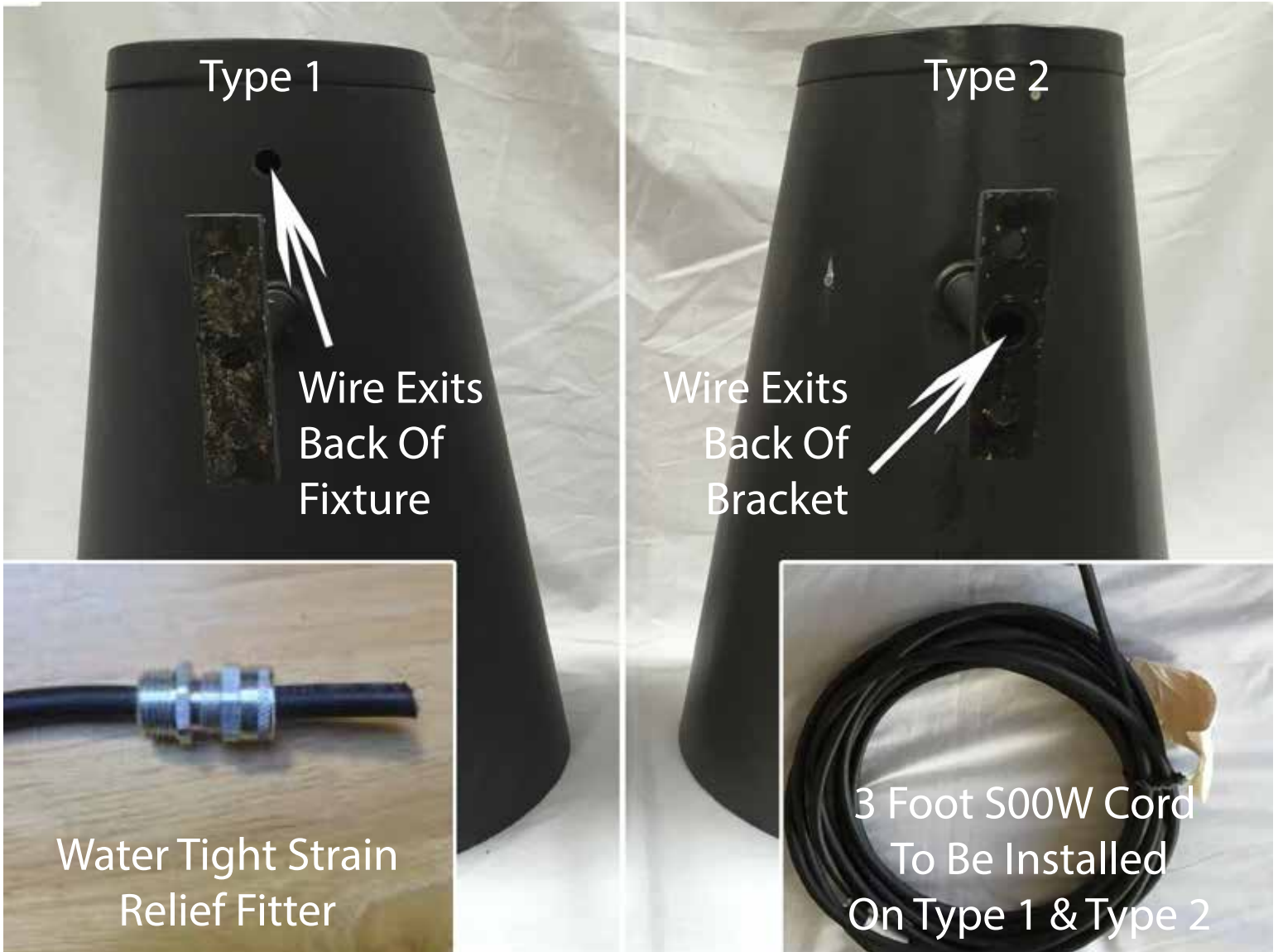
**Project: MIT - Kresge**

Lamp: LS-30-75WE-W27-NFL-  
120-S1-BX 14W 2700k  
Voltage: 120v

Finish: Tiger Drylac, 49/81210 Alaska  
Black Matte Polyester  
Socket: Medium Base      Circuits: 1

**QTY: 67 REV: 1 DATE: 6/30/15 TYPE: EX1 & F2**

MIT - KRESGE  
TYPE: EX1 & F2  
FIXTURE STYLES



**Description:**

- Wire exits at two different locations on Type 1 and Type 2 styles.
- Water tight strain relief fitter to be installed on Type 1 (back of fixture) wire exit.
- 3 feet of 16/3 S00W cord to be installed on Type 1 and Type 2.

Approval: \_\_\_\_\_ Date: \_\_\_\_\_

**GRAND LIGHT**  
Historic Lighting Restoration & Custom Lighting  
104 Day St. Seymour, Ct 06483  
PH: 1-800-922-1469 Fax: 203-785-1184  
Web: LightRestoration.com

**Project: MIT - Kresge**  
Lamp: LS-30-75WE-W27-NFL-120-S1-BX 14W 2700k      Finish: Tiger Drylac, 49/81210 Alaska Black Matte Polyester  
Voltage: 120v      Socket: Medium Base      Circuits: 1  
**QTY: 67 REV: 1 DATE: 6/30/15 TYPE: EX1 & F2**